

SOLENOID VALVES FOR REFRIGERANT

High Volume OEM Item

Type NEV & TEV

SAGINO MIYA

GENERAL DESCRIPTION

- Direct-operated (type NEV-202DXF, type TEV), pilot operated (type NEV-603DXF, 803DXF, 1204DXF), 2-way, normally closed valve. Normally open type is available (type NEV-L202DXF@3).
- For use with non-corrosive refrigerant.
- Compactly designed for use in small appliances produced in quantity such as room air conditioners, dehumidifiers and ice making machines.
- Various piping configuration available.
- Quick connect terminal ... Available upon request.



Type NEV



Type TEV

TYPE NUMBER SELECTION (SPECIFICATIONS)

Unit: MPa {kgf/cm²}

Catalog No.	Port Size (mm)	Connection		O.P.D.		Max. Working Pressure	Operation	Wt. (kg)
		Copper Tube O.D.	Style	Min.	Max.			
NEV-L202DXF@3	1.8	1/4"	Solder	0	2.06 {21}	2.94 {30}	Normal Open	0.18
NEV-202DXF	1.9							
NEV-603DXF	5.8							
NEV-803DXF	7.8							
NEV-1204DXF	11.0							
TEV-1620DQ2	1.6	1/4"	Solder	0	2.7 {27.6}	3.3 {33.7}	Normal Close	0.13
TEV-1920D	1.9			0.01 {0.1}	1.7 {17.3}			
				0.015 {0.15}				0.28
								0.22
								0.39

- O.P.D.: Operating Pressure Differential (by air pressure)
- Ambient temperature: -20 to 50°C (type NEV), -30 to 50°C (type TEV)
- Allowable fluid temperature: -30 to 120°C (type NEV), -30 to 110°C (type TEV)

ELECTRICAL RATING OF SOLENOID COILS

Type NEV

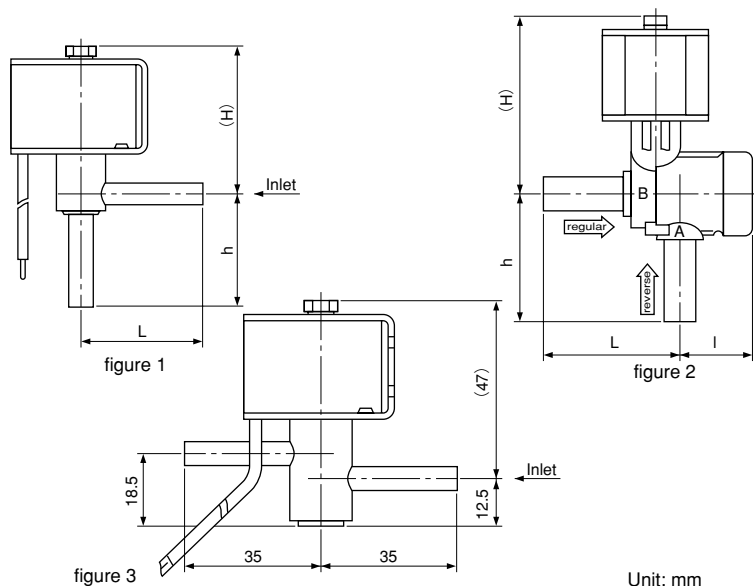
Rated Voltage	Tolerance (%)	Voltampere		Power Consumption (W)	Insulation Class
		Running	Inrush		
24V. AC 100V. AC 110V. AC 120V. AC 200V. AC 220V. AC 230V. AC 240V. AC	50/60Hz ±10	11/9	33/27	7/6	Class B Molded

Type TEV

Rated Voltage	Tolerance (%)	Power Consumption (W)	Insulation Class
100V. AC 220V. AC 230V. AC 240V. AC	50/60Hz ±10	5/4	Class B Molded

Current (A)=Voltampera / Rated Voltage

DIMENSIONS



Unit: mm

Catalog No.	Unit: mm				Form
	L	H	h	l	
NEV-	152DX	35	43	33	figure 1
	202DX				
	603DX	36.5	55	36	figure 2
	803DX	41.5	53.5	38.5	
	1204DX	61.5	57.5	61.5	
	L202DX	—	—	—	figure 3
TEV-	1620DQ2	35	40	33	figure 1
	1920D				