

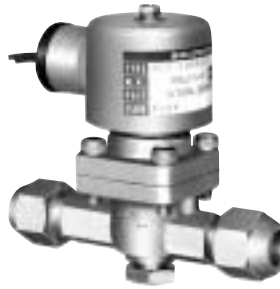
SOLENOID VALVES FOR REFRIGERANT

Type REV

SAGINOMIYA

GENERAL DESCRIPTION

- Pilot operated, 2-way, normally closed valve.
- For non-corrosive refrigerant (liquid or gas) in refrigeration, cooling, air conditioning systems.
- “Double plunger” construction provides reliable On/Off action.
- Compact molded coil commonly fits all valve sizes.
- Operates in any position ... can be conveniently located in horizontal or vertical line with coil on top.
- Manual Opening Stem ... On Flange connection models, supplied as standard. On Flare or Solder connection models, supplied upon request.



Type REV-B



Type REV-D

TYPE NUMBER SELECTION (SPECIFICATIONS)

Unit: MPa {kgf/cm²}

Catalog No.	Port Size (mm)	Connection		Style	O.P.D.		Max. Working Pressure	Wt. (kg)								
		Copper Tube O.D.	Steel Tube O.D.													
REV-703BXF	7	3/8"	—	Flare	0.007 {0.07}	2.45 {25}	2.94 {30}	0.6								
REV-1004BXF	10	1/2"						Rc (FPT)	0.9							
REV-1205BXF	12	5/8"							1.1							
REV-1506BXF	15	3/4"							1.5							
REV-1003GXF	10	3/8"							Solder	1.0						
REV-1204GXF	12	1/2"								1.3						
REV-1506GXF	15	3/4"		1.7												
REV-703DXF	7	3/8"		0.5												
REV-1004DXF	10	1/2"		0.8												
REV-1205DXF	12	5/8"		0.9												
REV-1506DXF	15	3/4"		1.1												
REV-2007DXF	20	7/8"		*				Flange				1.6				
REV-2010DXF		1"										5.1				
REV-2011DXF		1-1/8"										7.7				
REV-2511DXF	1-1/8"	8.9														
REV-2512DXF	1-1/4"	10.8														
REV-2513DXF	1-3/8"	16.3														
REV-3213DXF	32	1-3/8"	3"		3"	2-1/2"	23.2	26.6								
REV-3214DXF		1-1/2"														
REV-3215DXF		1-5/8"														
REV-2006EXF	20	7/8"										1-1/4"	3/4"			
REV-2510EXF	25	1"										1-1/2"	1"			
REV-3212EXF	32	1-1/4"										1-5/8"	1-1/4"			
REV-4014EXF	40	1-1/2"	2"		1-1/2"											
REV-5020EXF	50	2"	2-1/2"		2"											
REV-6524EXF	65	2-1/2"	3"		2-1/2"											
REV-6530EXF		3"	3-1/2"		3"											

* With companion flange, specify copper tube O.D. size when order.

• O.P.D.: Operating Pressure Differential (by air pressure)

• Ambient temperature: -30 to 40°C, allowable fluid temperature: -40 to 125°C

• Apparent power: 16VA

ELECTRICAL RATING OF SOLENOID COILS

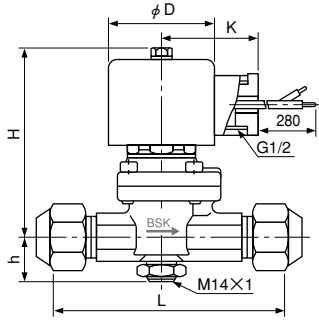
Rated Voltage		Tolerance (%)	Voltampere (VA)		Power Consumption (W)	Insulation Class
			Running	Inrush		
24V.AC, 100V.AC, 110V.AC 200V.AC, 220V.AC, 240V.AC	50/60Hz	+10 -15	17/14	43/35	8/7	Class B Molded
12V.DC, 24V.DC 48V.DC, 100V.DC	—		—	—	10	

Specify voltage & frequency when order.

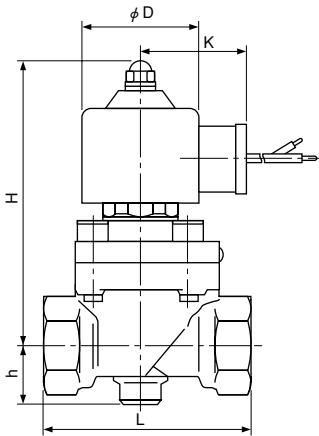
Current (A)=Voltampera / Rated Voltage

DIMENSIONS

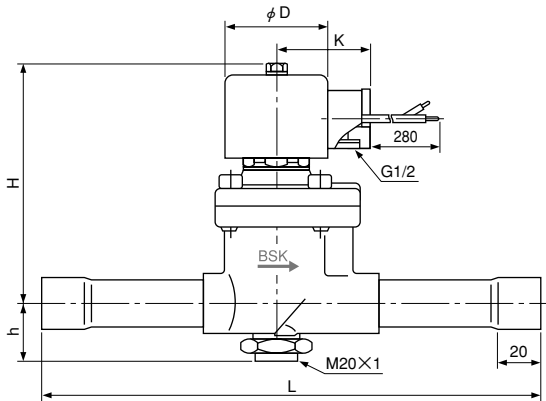
Type REV-BX



Type REV-GX

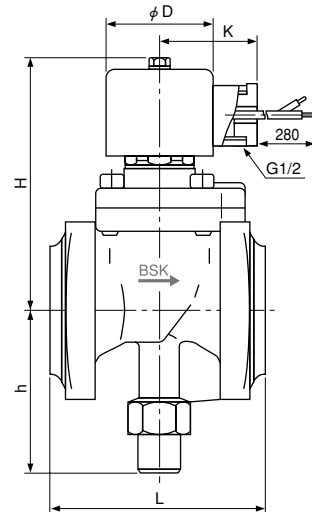


Type REV-DX



Catalog No.	Unit: mm				
	L	H	h	phi D	K
703BX	90	70	19	48	44
1004BX	105	88	21		
1205BX	115	90	22		
1506BX	135	96	25		
1003GX	65	89	20		
1204GX	75	94	21		
1506GX	85	99	24		
703DX	150	70	19		
1004DX	160	88	21		
1205DX	180	90	22		
1506DX	190	96	25		
2007DX	230	112	29		
2010DX					
2011DX					
2511DX					
2512DX	240	123	31		
2513DX					
3213DX	260	126	35		
3214DX					
3215DX					
2006EX	95	112	73		
2510EX	110	123	78		
3212EX	120	126	87		
4014EX	130	133	92		
5020EX	170	149	115		
6524EX	200	169	129		
6530EX	210				

Type REV-EX



Unit: mm